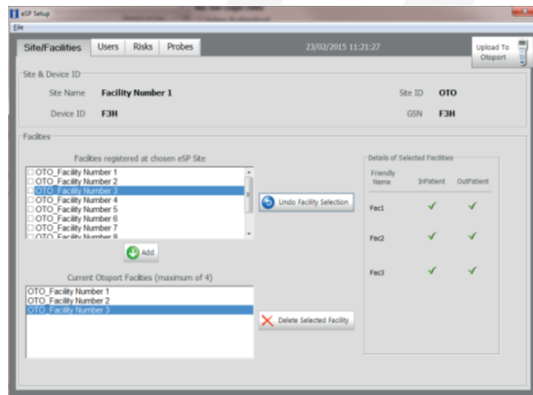


Otoport NHSP Manual Addendum

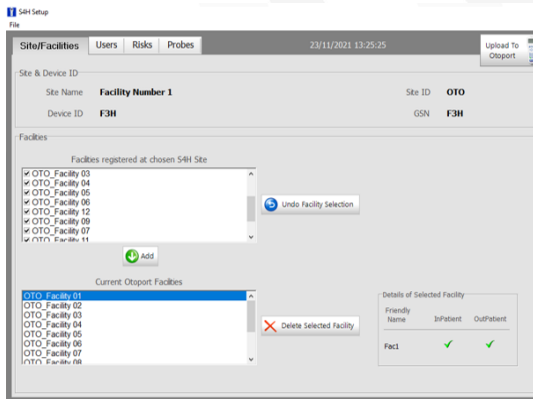
- **Otolink IFU:** MANona - Otoport NHSP OAE ABR Manual Issue 4.3
- **Minimum requirements for use of this addendum**
 - Otolink Software- S/W: >= v2.27.0.27
 - Otoport firmware- F/W: >= v1.19.1.11

In Page 121 of the Otoport NHSP IFU

- Instead of the current image



Use the one below instead which shows over 4 facilities loaded up.



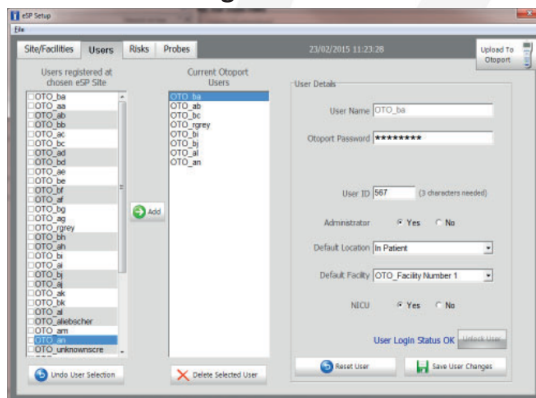
- In paragraph 3, eliminate reference to “Maximum of four facilities per Otoport”

- **And instead be aware that**

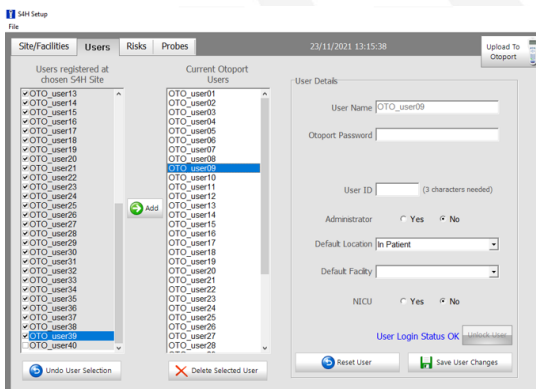
“It is now possible to register up to 12 facilities during S4H setup.

In Page 122 of the Otoport NHSP IFU

- Instead of the current image



Use The one below, which shows **more than 30 users** loaded up.



In Page 123 of the Otoport NHSP IFU

- In the last paragraph, eliminate reference to
“Up to 30 users may be registered on an Otoport”
- **And instead be Aware that**
“It is now possible to register up to 39 users during S4H setup.”